

NEWSLETTER



DEAR FRIENDS, COLLEAGUES, PAST AND FUTURE CLIENTS,

I'm dreaming of a white Christmas.....I'm not sure about the rest of you...but I love Christmas....I just seem to spend it in the wrong hemisphere most the time... With the mercury rising and a hectic 9 days left until Santa arrives....we too have been rushing to get those last jobs done before we close the office for a much deserved break....(we are closed from 21st Dec and re-open on 11th Jan) ...So we understand in the madness that is the run down towards Christmas, time is preciousSo this newsletter we thought we would make it a more visual offering... We hope you like our concepts...

And have a **Merry Xmas** and a safe, happy and prosperous **New Year**.

ARCHITECTS AUSTRALIA'S UNBUILT AWARDS ENTRY

BRIEF – ANY PROJECT AS OF ENTRY DATE REMAINS CONCEPTUAL OR UNCOMPLETED



PENINSULAR MARINA RESORT CLONTARF - QUEENSLAND

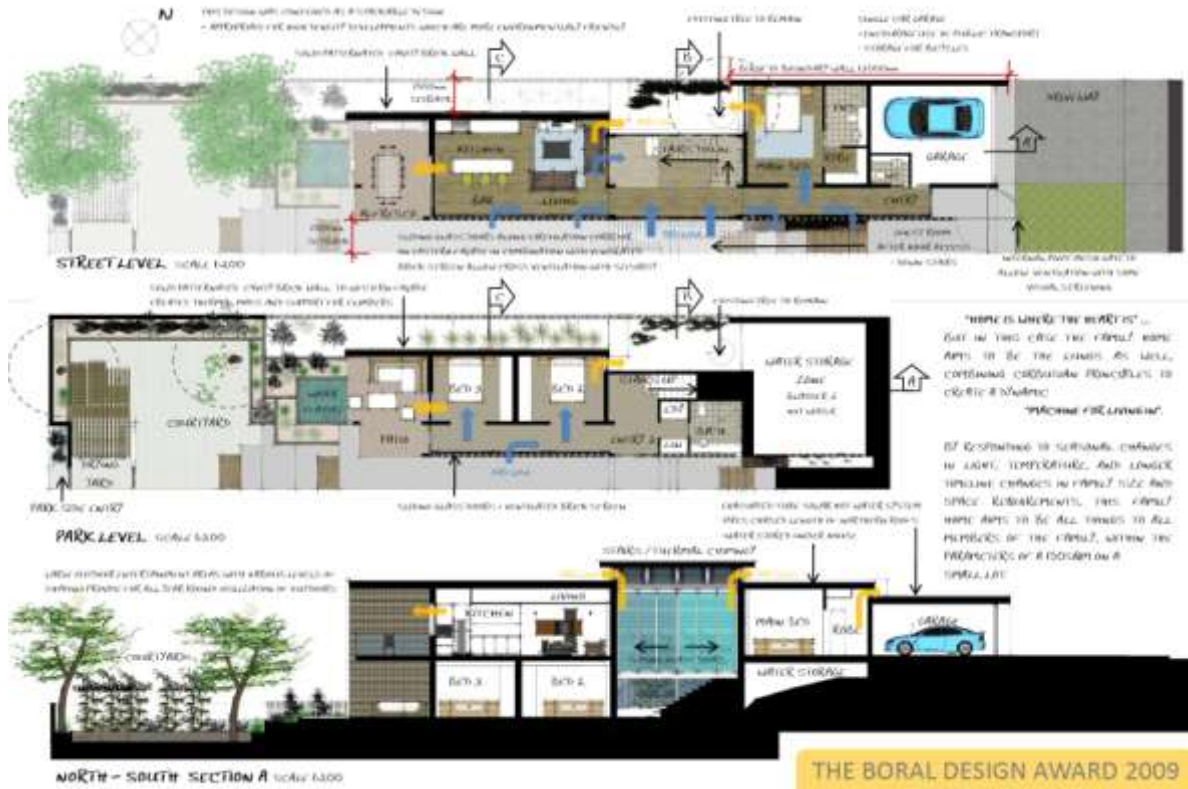
OUR CONCEPTS ADDRESSES THE TOPICS OF **LANDMARK, IDENTITY & BRANDING**. DRAWING ON EXAMPLES OF THE SYDNEY OPERA HOUSE, THE GUGGENHEIM MUSEUM IN BILBAO & THE BURJ AL ARAB WHICH ALL ARE EASILY IDENTIFIABLE MODERN ARCHITECTURAL LANDMARKS. PROVING ARCHITECTURE OF NOTE AND SCALE CAN HELP PUT A CITY ON THE GLOBAL TOURIST MAP, NOT ONLY ACTING AS A POWERFUL TOOL IN REGENERATING AND REVITALIZING A COMMUNITY THROUGH INCREASED REVENUE BUT THROUGH THE "PRIDE OF PLACE" IT INSTILLS IN THE LOCAL COMMUNITY.



AE

DIRECTOR: G. T. KILDEY

ARCHITECTS AUSTRALIA'S BORAL DESIGN AWARD ENTRY 2009
BRIEF – < 150SQM FAMILY HOME ON SPECIFIED SITE MEDIUM PRICE RANGE USING BORAL PRODUCTS



THE BORAL DESIGN AWARD 2009
ARCHITECTS AUSTRALIA - GED

THE ENTRY OF THE HOUSE IS A TWO-LEVEL HOME WITH A GARAGE AND A PORCH. THE HOUSE IS A TWO-LEVEL HOME WITH A GARAGE AND A PORCH. THE HOUSE IS A TWO-LEVEL HOME WITH A GARAGE AND A PORCH.



LOWER FLOOR ENTRY



THE BORAL DESIGN AWARD 2009
ARCHITECTS AUSTRALIA - GED

NEWSLETTER

C O N T I N U E D



EASTERN FACADE

THESE WALLS BRING A NEW DIMENSION TO THE
 FACADE BY ADDING A COMPLEXITY TO THE
 BRICK FACADE WHICH IS NOT ONLY VISUALLY
 INTERESTING BUT ALSO PROVIDES A
 SHADING EFFECT TO THE FACADE



WESTERN FACADE

CONTRASTING TO THE EASTERN FACADE
 THIS FACADE IS MORE OPEN AND
 INVITING. THE BRICK FACADE IS
 MORE OPEN AND INVITING. THE
 BRICK FACADE IS MORE OPEN AND
 INVITING. THE BRICK FACADE IS
 MORE OPEN AND INVITING.

ALONG WITH THE BRICKWORK FACADES THERE ARE OTHERS, SUCH AS THE
 GLASS FACADES OF THE LATER STORIES, AND ALSO THE FACADES OF THE
 TERRACE. FROM THE ARCHITECTURE, THE BRICKWORK FACADES ARE
 CONSIDERED AS THE MAIN FACADES, AND ARE CONSIDERED AS THE
 MAIN FACADES. THERE IS ALSO A FACADE OF THE LATER STORIES
 WHICH IS ALSO CONSIDERED AS THE MAIN FACADE. THE BRICKWORK
 FACADES ARE CONSIDERED AS THE MAIN FACADES. THE BRICKWORK
 FACADES ARE CONSIDERED AS THE MAIN FACADES. THE BRICKWORK
 FACADES ARE CONSIDERED AS THE MAIN FACADES.



STREET VIEW

THE BRICKWORK FACADES OF THE LATER STORIES OF THE PROJECT IS
 CONSIDERED AS THE MAIN FACADES. THE BRICKWORK FACADES
 ARE CONSIDERED AS THE MAIN FACADES. THE BRICKWORK FACADES
 ARE CONSIDERED AS THE MAIN FACADES. THE BRICKWORK FACADES
 ARE CONSIDERED AS THE MAIN FACADES.

THE BORAL DESIGN AWARD 2009
ARCHITECTS AUSTRALIA - QLD



SOUTHERN FACADE

THESE WALLS BRING A NEW DIMENSION TO THE
 FACADE BY ADDING A COMPLEXITY TO THE
 BRICK FACADE WHICH IS NOT ONLY VISUALLY
 INTERESTING BUT ALSO PROVIDES A
 SHADING EFFECT TO THE FACADE



COURTYARD VIEW



THE BORAL DESIGN AWARD 2009
ARCHITECTS AUSTRALIA - QLD

NEWSLETTER

C O N T I N U E D



To: FRIENDS, FAMILY & COLLEAGUES



From all of us at Architects Australia,
We wish you a very Merry Xmas
and a Happy New Year.

Graham Kildey **Brooke Kildey**
DIRECTOR ASSOC. DIR.

LVL 4 NORTHPOINT BLDG, 231 NORTH QUAY, BRISBANE Q 4000
P. +61. 7. 3236 4000 F. +61. 7. 3236 3608
• architectsaustralia.com.au • info@architectsaustralia.com.au



XMAS JOKES FOR THE KIDS/ GRANDKIDS... & UNSUSPECTING GUESTS

QUESTION: WHAT DO YOU GET WHEN YOU CROSS AN ARCHER WITH A GIFT-WRAPPER?

ANSWER: RIBBON HOOD.

QUESTION: WHY DOES SANTA HAVE 3 GARDENS?

ANSWER: SO HE CAN HO-HO-HO.

QUESTION: WHAT DO YOU GET WHEN YOU CROSS A SNOWMAN WITH A VAMPIRE?

ANSWER: FROSTBITE.

Our WEBSITE....

💧 VISIT OUR NEW WEBSITE AND TELL US WHAT YOU LIKE AND WHERE WE CAN MAKE IMPROVEMENTS
www.architectsaustralia.com.au

Find us on TWITTER

💧 WE HAVE JUST PASSED OUR 100TH TWITTER...SO MAYBE WE ARE MORE LIKELY TO CHERP... BUT WE ARE NOT ONE TO BE LEFT BEHIND BY THE FLOCK...
<http://twitter.com/ArchitectsAust>

Our BLOG....

architectsaustralia.blogspot.com

If there are any aspects of our Newsletter you would like to discuss or just want to know more about, please do not hesitate to contact us.

KIND REGARDS
BROOKE KILDEY
ARCHITECT & ASSOCIATE DIRECTOR



TO HELP US IN REDUCING OUR ENVIRONMENTAL IMPACT, SUBSCRIBE TO AN ELECTRONIC VERSION OF OUR NEWSLETTER BY EMAILING - SUBSCRIBE@ARCHITECTSAUSTRALIA.COM.AU

ABN: 12 010 362 937

DIRECTOR: G. T. KILDEY