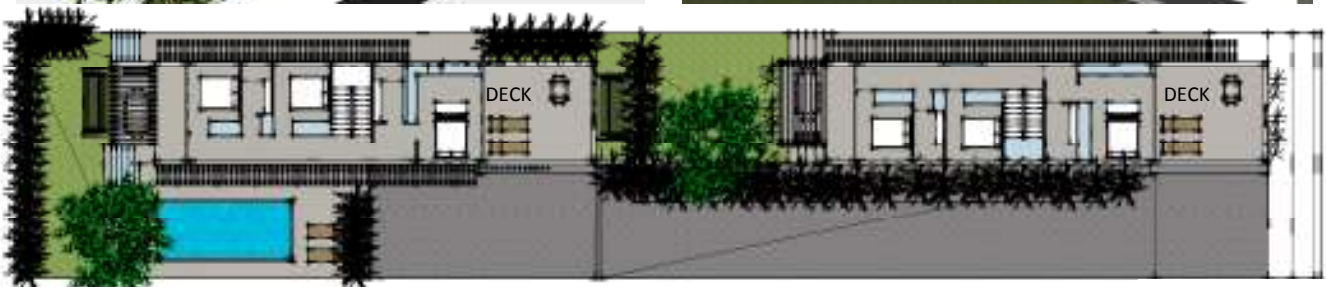


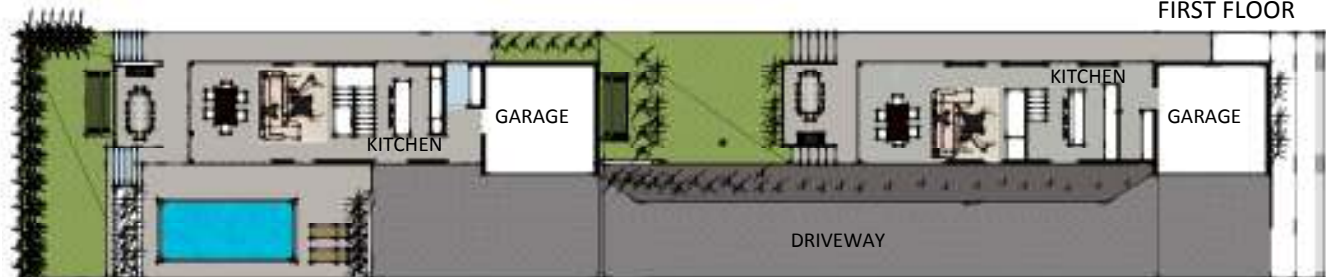
NEWSLETTER

DEAR FRIENDS, COLLEAGUES, PAST AND FUTURE CLIENTS,

Bring out your woolies, turn on the heater, find your ugg boots and stock up on hot chocolate, winter has finally arrived. Winter for most animals is when they enjoy a much deserved hibernation period, taking the time to rest and slow down in the cooler months...not us however, we are currently crazy busy....working late nights burning the candle at both ends just to meet deadlines... So for your viewing pleasure, and just to keep you in the loop we have a purely visual offering this newsletter, a couple of design projects we have recently delivered for clients looking at refurbishment and development potential of investment properties. Gilbert Rd (below) is a 890m2 block with a narrow street frontage. On the client's request we created a quick proposal for maximizing the development potential of the site. You will see the design caters for two dwellings, both 3 bedroom, 2 bathroom, separate laundry, double garage and most importantly seamless indoor outdoor entertainment spaces, that are both open and welcoming but provide privacy from the neighbours.



FIRST FLOOR



GROUND FLOOR

NEWSLETTER

C O N T I N U E D



ARCHITECTURAL WORDS OF THE SEASON

CATENARY CURVES - CATENARY IS THE MATHEMATICAL CURVE USUALLY ASSOCIATED WITH THE SHAPE TAKEN BY A CABLE LOADED BY ITS OWN SELF-WEIGHT WHEN SUSPENDED FROM TWO SUPPORTS TO CREATE A SPAN. ANTONIO GAUDI USED CATENARY CURVES IN HIS STRUCTURAL INVESTIGATIONS TO DETERMINE THE PROPORTIONS AND SHAPE OF THE BRICK-ARCHED CONSTRUCTION OF HIS CHAPEL AT SANTA COLOMA AND SAGRADA FAMILIA IN BARCELONA. BY USING COMPOSITIONS OF STRING AND BALANCE WEIGHTS HUNG UPSIDE DOWN HE WAS ABLE TO DETERMINE THE CORRECT SHAPE OF CATENARY CURVES, THAT WOULD TRANSFER THE LOAD FROM PURE TENSION TO PURE COMPRESSION.

JOKES & THOUGHTS

What does a Mexican carpet layer say?

Underlay, Underlay

"If you think good architecture is expensive, try bad architecture."

Two carpenters were working on a house. The one who was nailing down siding would reach into his nail pouch, pull out a nail and either toss it over his shoulder or nail it in. The other, figuring this was worth looking into, asked,

"Why are you throwing those nails away?"

The first explained, "If I pull a nail out of my pouch and it's pointed toward me, I throw it away 'cause it's defective. If it's pointed toward the house, then I nail it in!"

The second carpenter got completely upset and yelled, "You moron! The nails pointed toward you aren't defective! They're for the other side of the house!"



Whereas the Albion apartment design resolution (above) took a simple 2 bed, 1 bath and turned it into a 2 bed, 2 bath, plus laundry room with much larger kitchen and increased the available storage. Not only adding value through the additions but creating a much more enjoyable living space.

Thanks for keeping up to date with our latest and greatest, we hope you enjoy our seasonal updates, if you have anything you would like to add we would love to hear from you. To view our previous newsletters, please just go to our website, to our Media section - www.architectsaustralia.com.au

Otherwise if you are considering a project, big or small, Residential, Commercial, Multi-residential, Sports and Leisure or a Fit-out, we would love to help you, so please contact us to arrange an obligation free meeting in our office.

KIND REGARDS
BROOKE KILDEY
 ASSOCIATE DIRECTOR / ARCHITECT



TO HELP US IN REDUCING OUR ENVIRONMENTAL IMPACT, SUBSCRIBE TO AN ELECTRONIC VERSION OF OUR NEWSLETTER BY EMAILING - SUBSCRIBE@ARCHITECTSAUSTRALIA.COM.AU DIRECTOR: G. T. KILDEY

ABN: 12 010 362 937